

The information contained in this documentation is the property of MAZeT. Photocopying or otherwise reproducing any part of the catalog, whether electronically or mechanically, is prohibited, except where the express permission of MAZeT GmbH has been obtained. In general, all company and brand names, as well as the names of individual products, are protected by brand, patent or product law.

VERSION CHANGE		
NO.	ISSUE	APPROVED
1	V 1.0	2009-01-12

## Data Sheet

# How to install the modEva software

**Description of the installation steps for the modEva software.**

### Table of contents

1 MODEVA SOFTWARE INSTALLATION .....	2
1.1 Uninstall the old modEva Software .....	2
1.2 Uninstall the old driver .....	3
1.3 Setup .....	4

MAZeT GmbH Sales  
 Göschwitzer Straße 32  
 07745 JENA / GERMANY  
 Phone: +49 3641 2809-0  
 Fax: +49 3641 2809-12  
 E-Mail: sales@MAZeT.de  
 Url: <http://www.MAZeT.de>

Approvals	Date	MAZeT GmbH	
Compiled:	2009-01-12	Status: valid	
Checked:	2009-01-12		
Released:	2009-01-12	DOC. NO.: DB-09-259e	Page 1 of 6

NO.	ISSUE	APPROVED
1	V 1.0	2009-01-12

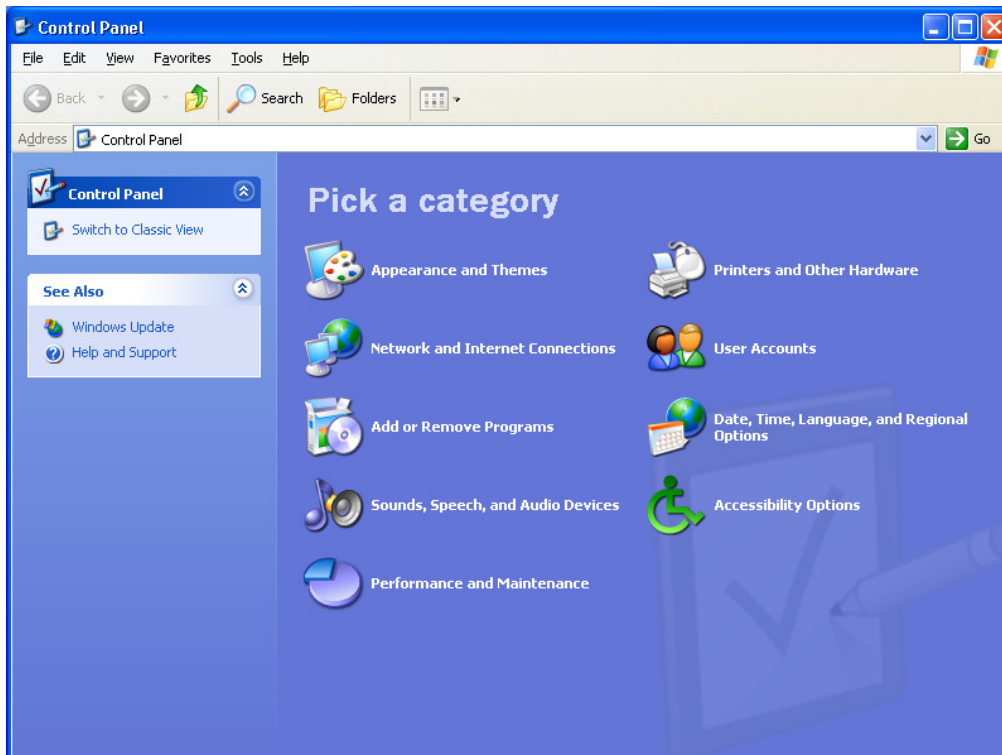
## 1 MODEVA SOFTWARE INSTALLATION

This document describes the approach during the installation process of the modEva software.

### 1.1 Uninstall the old modEva Software

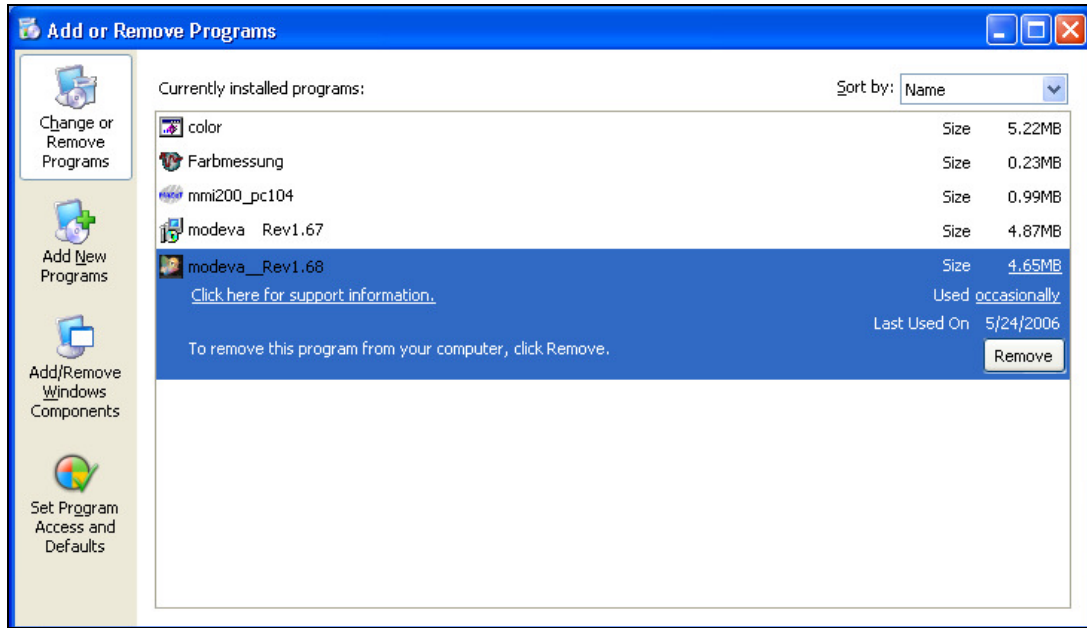
If you have installed any other version of the modEva Software on your pc so uninstall this one. For this step go to the “Add or Remove Programs” window and select the modEva Software. The following picture 1 and 2 shows an example for the uninstall process. You will find this window under the following path:

“Start→ Settings→Control Panel→Add or Remove Programs”



Picture 1: Control Panel

VERSION		
NO.	ISSUE	APPROVED
1	V 1.0	2009-01-12

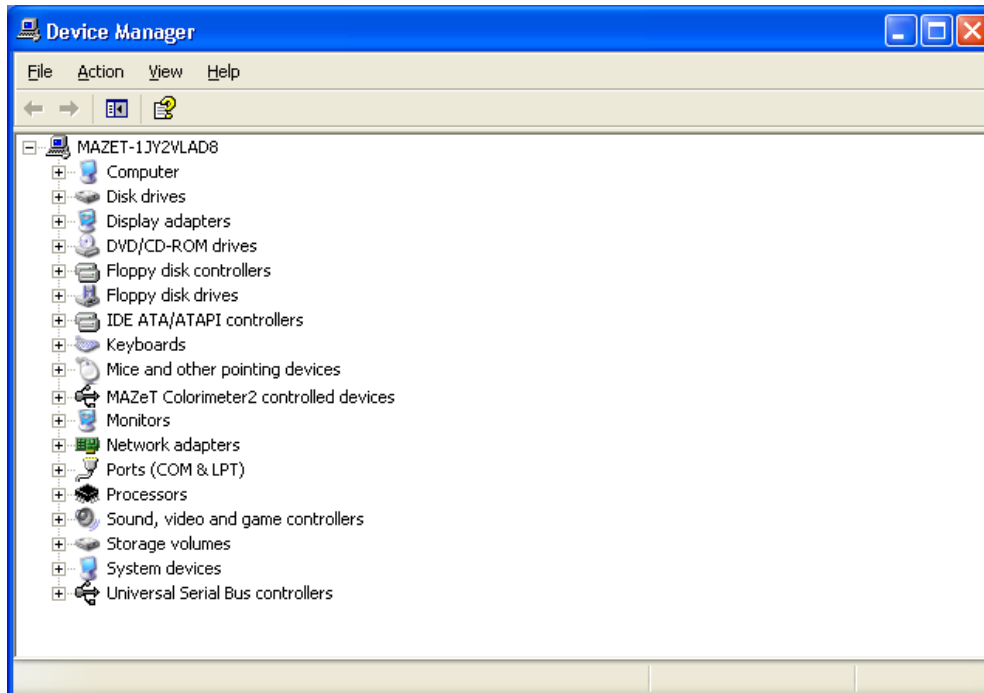


Picture 2: Add or Remove Programs window

## 1.2 Uninstall the old driver

To uninstall the old driver open the “Device Manager”. You will find this window on the following way:

“Right Click My Computer → Properties→Hardware→Device Manager”



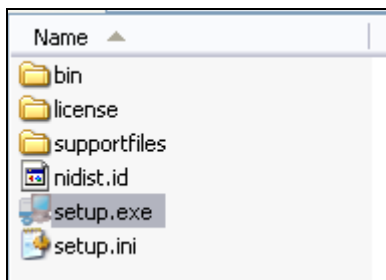
Picture 3: Device Manager

VERSION		
NO.	ISSUE	APPROVED
1	V 1.0	2009-01-12

For the uninstall step select the device for example “MAZeT Colorimeter 2 ...” and uninstall this Device with a “Right click→Uninstall”.

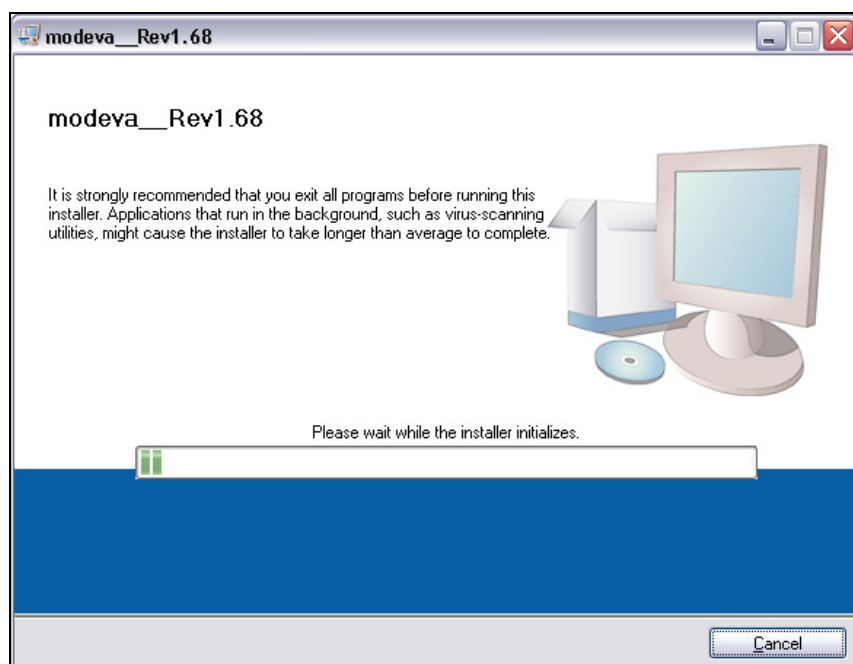
### 1.3 Setup

To run the installation of the new modEva software start the file “setup.exe” on the data medium. The following image 4 shows the folder structure and the setup files.



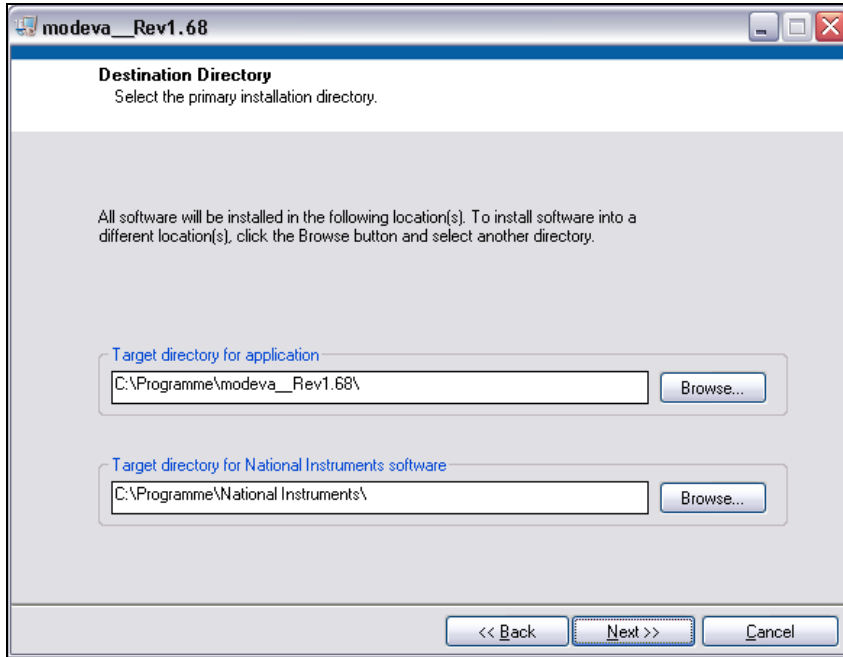
Picture 4: Folder structure

After you started the setup routine you will see the following windows. The next windows show the order of the installation. Should you be required to confirm a step, so press “next”.

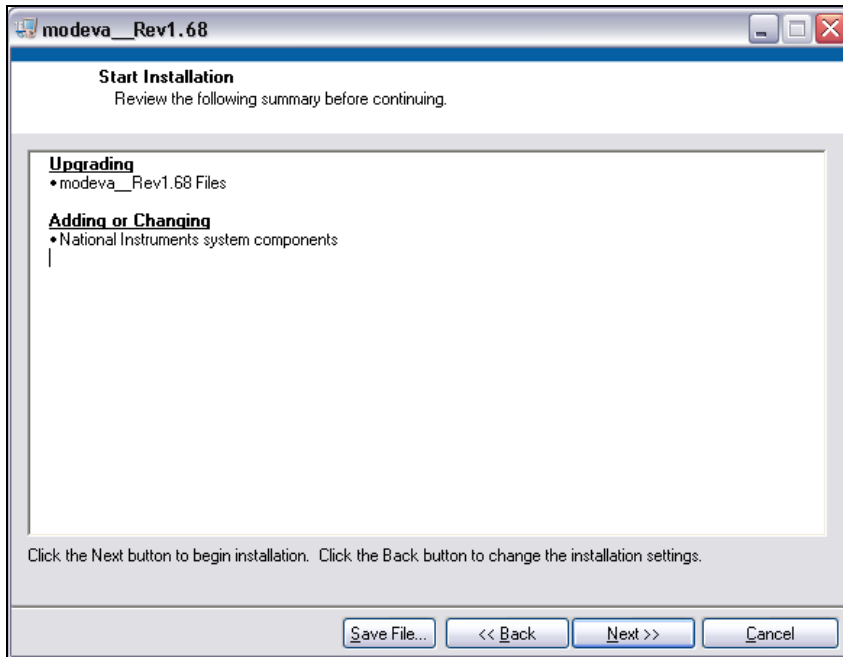


Picture 4: First installation window

VERSION		
NO.	ISSUE	APPROVED
1	V 1.0	2009-01-12



Picture 5: Second installation window



Picture 6: Third installation window

After you finished the Setup restart your Computer and unplug all Sensorboards. After the reboot you can plug in the Sensorboards again.

VERSION		
NO.	ISSUE	APPROVED
1	V 1.0	2009-01-12

---

For further information please contact:

**MAZeT GmbH**

**Sales office:**

Göschwitzer Strasse 32

07745 JENA

GERMANY

Phone: +49 3641 2809-0

Fax: +49 3641 2809-12

E-Mail: [sales@MAZeT.de](mailto:sales@MAZeT.de)

URL: <http://www.MAZeT.de>

**WARNINGS**

**Personal Injury** – Do not use these products as safety or emergency stop devices, or in any other applications where failure of the product could result in personal injury. **Failure to comply with these instructions could result in death or serious injury.**

**Misuse of Documentation** – The information presented in this data sheet is for reference only. Because this products are under development do not use this document as product installation guide. Before you start any development ask your supplier for the latest version of this sheet. **Failure to comply with these instructions could result in death or serious injury.**