

Modular JENCOLOR Evaluation-Kits

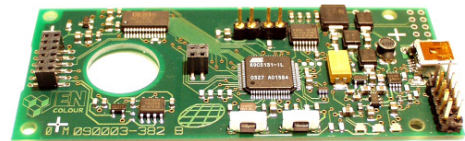
PRODUCT INFORMATION

The modEVA concept for JENCOLOR color sensors

- ▶ *Modularly configurable application board, comprising main board, sensor plug-modules, optical adaptation, illumination and firm-/software*
- ▶ *Suitable for color detection and color measurement of reflectance, emission, transmission according to Tri-stimulus value function under DIN5033*
- ▶ *configurable in function, parameters and interface*
- ▶ *Integration in customer applications via API (DLL) and Hardware interfaces*

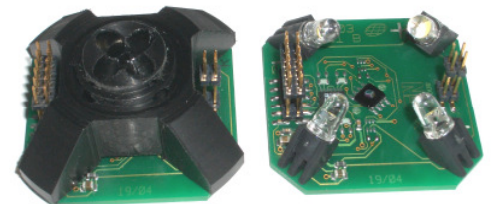
Main Board MTCS-ME1 (modEVA, modEVA(front))¹

- μ C-controlled signal detection
- Digitization with 12-Bit resolution
- Free memory space for calibration and correction data
- Led-through interrupt and IO terminal pins for integration into control sequences
- Voltage supply via USB (separate voltage supply connector for RS232 and I²C)
- Programmable voltage source for controlling the target illuminators
- Provided assembly versions – for interfaces (USB, I²C, RS232), plug modules



Plug Module modEVA-TOP

- Sensor module for modEVA main board for color measurement of reflective flat targets
- Illumination/sensor geometry 45°/0° to main board
- Incl. 4x white LED, sensor and signal amplifier

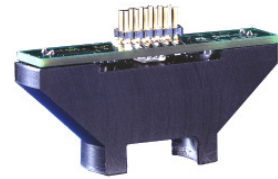


¹ Please note, there are 2 special Main Boards for TOP/ DARK and FRONT with different electrical connectors

Modular JENCOLOR Evaluation-Kits

Plug Module *modEVA-FRONT*

- Sensor module for *modEVA(front)*² main board for color measurement of reflective flat targets
- Illumination/sensor geometry 45°/0° to main board
- Incl. 2x white LED, sensor and signal amplifier



Plug Module *modEVA-DARK (TIA, CCC)*

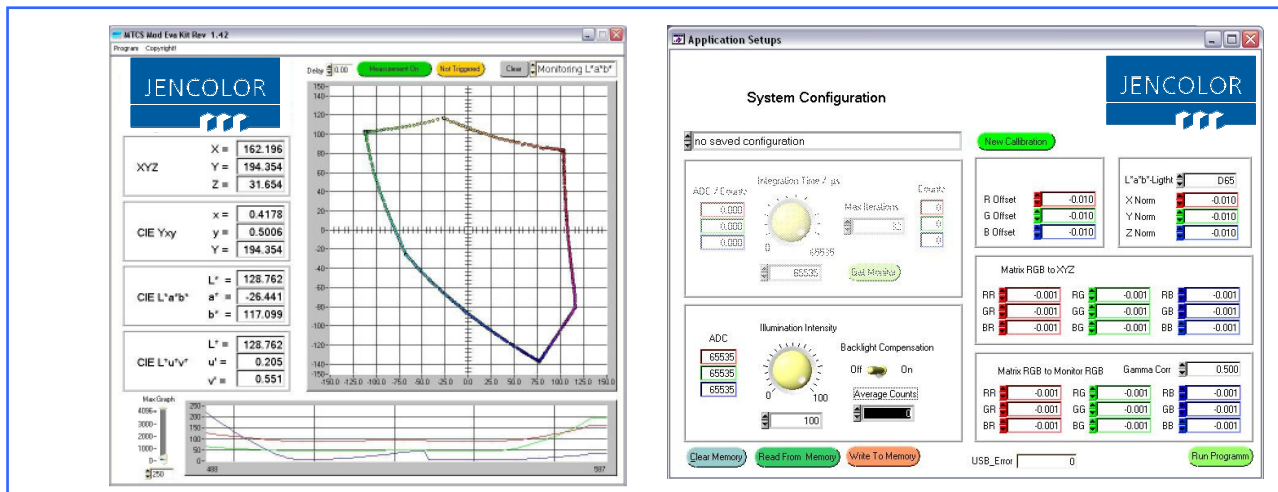
- Sensor module for *modEVA* main board for color measurement of luminescent targets or reflective flat targets with external illumination
- TIA and current-to-charge converter configurations selectable
- Sensor geometry 0° (to main board), with gap optics 2° aperture angle



modEVA Software

- Averaging of multiple ADC access operations
- Measured value logging using ambient light compensation
- Smart control for signal integration (*modEVA-DARK* with current-to-charge conversion)
- Brightness control for the illuminator LEDs
- Option for calibration via a 3x3 correction matrix (Set of 24 targets)
- Management of application-specific settings and calibration data, storage in on-board memory
- API (DLL) and Driver for Interface (USB, RS232) available

modEVA Test Software – Measurement value display and configuration window



For more information please visit our web site at www.JENCOLOR.de or contact our sales offices!

² *modEVA(front)* with same functionality to *modEVA* with alternative electrical connectors