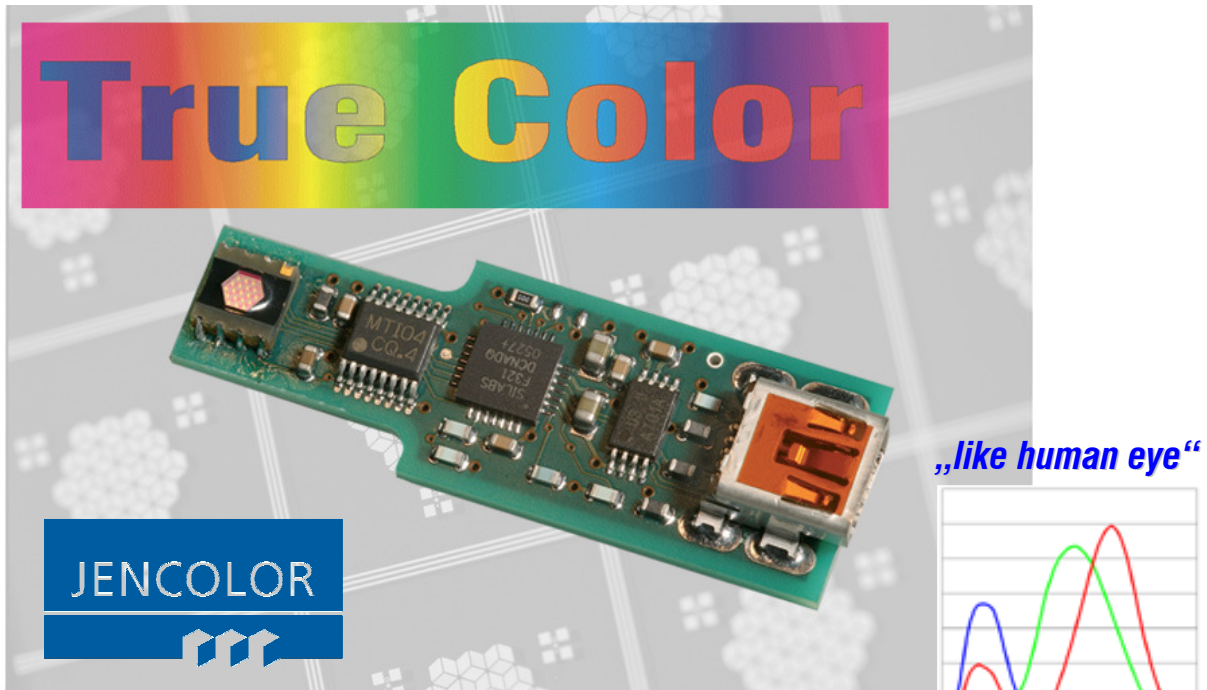


# MTCS-C2 Board Colorimeter

## The OEM Solution 'Like Human Eye'

PRODUCT INFORMATION



In addition to its True Color IC solutions, MAZeT offers a series of colorimeter boards, supplemented by software and drivers, based on the MAZeT MTCS series. These boards are targeted at OEM customer solutions for color measurement and control.

The MTCS-C2 'Colorimeter 2' True Color Sensor Board is a standard production board, which in addition to the color sensor IC also integrates the complete signal amplification and processing as well as a microcontroller including the interface.

Along with the sensor hardware, MAZeT provides a USB driver and user software for:

- calibration of the measuring system on the basis of color targets
- control of the sensor
- visualisation and logging of the measurement values in XYZ, Lab or similar.

The board's optical channel is provided with a mechanical aperture to comply with 10° measuring geometry requirements. Calibration of the board as a measuring system is performed at the factory.

The sensor can be used immediately for measuring functions after connection to a PC and installation of the software. The user can set up his own light source or as an alternative he can use the modEVA from MAZeT.

The Colorimeter 2 is recommended for general color detection and measurement tasks according to DIN 5033 (CIELAB standard).

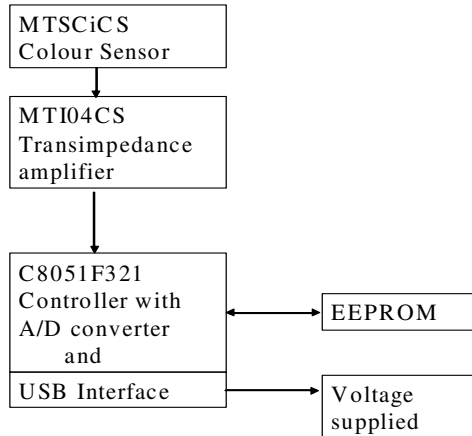
With relatively simple preparation, this sensor solution definitively meets the accuracy of the human eye in any application and is, therefore, ideally suited for color testing or recognition - 'Like Human Eye'.

### Technical Overview

- Can be matched to customer requirements
- integrated True Color Sensor MTCSiCS
- integrated transimpedance amplifier MT104CQ
- C8051F321 micro controller
- USB interface
- EEPROM - Free memory space for compensation and correction data

## MTCS-C2 Board Colorimeter – The OEM Solution ‘Like Human Eye’

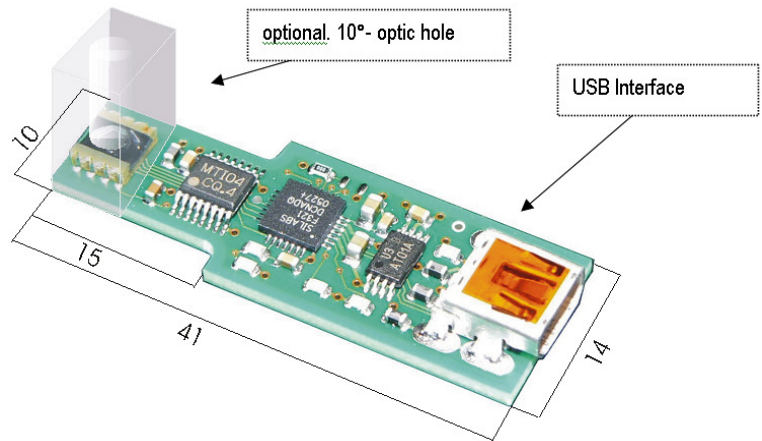
### MTCS-C2 principle block diagram



### Scope of Delivery

MTCS-C2 delivery includes:

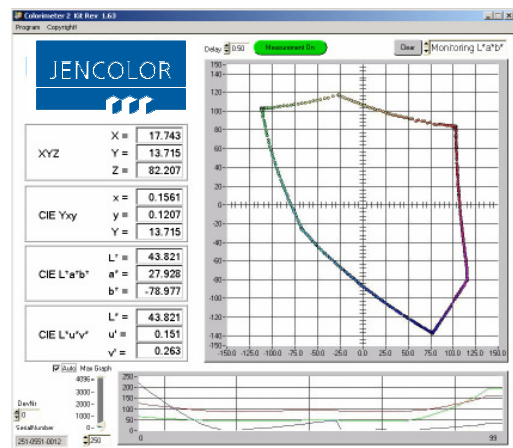
- MTCS-C2 ( $\mu$ C Version 0.1x)
- Documentation
- Optional USB cable
- Optional "colorimeter2.exe" PC software (with USB driver of SYS and MTCSApi.dlltype)
- Optional macro functions library
- Optional 10° optics consisting of shutter



### System Requirements

For start-up procedures, the following system resources are required:

- PC Pentium 150 MHz or higher
- 8 MB RAM
- 5 MB free hard drive memory
- One free USB(2.0) port
- MS Windows™ XP / 2000



For more information please visit our web site at [www.JENCOLOR.de](http://www.JENCOLOR.de)

or contact our sales offices!